

## Vught Concentration Camp (continued)

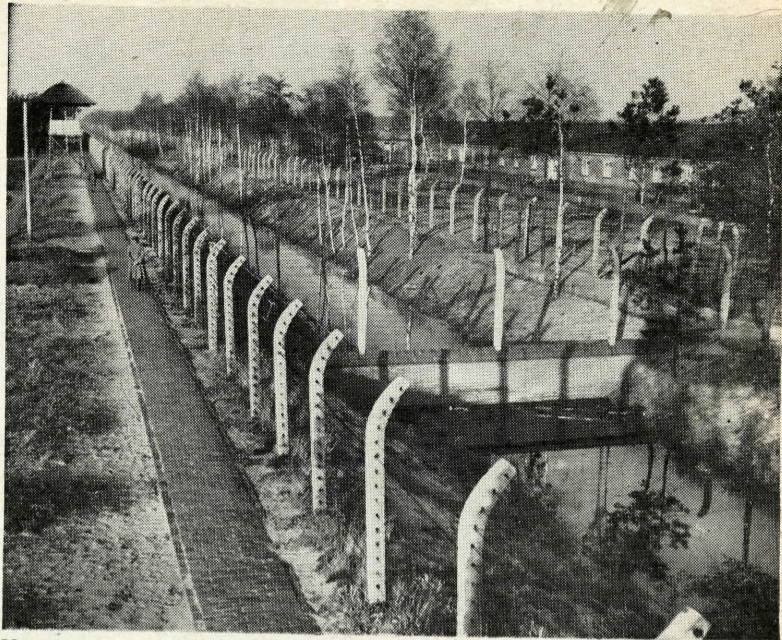


**Cremation furnace** held one whole body at a time but during busy periods Nazis cut off victims' legs and squeezed in three at a time. The whole prison was solidly built for permanence. Most inmates were members of the underground, Jews or hostages.



**Portable furnace** was also used for cremation of the dead. In foreground are visible some of the bones and ashes of the consumed. In the last three days before Allied armies arrived in October, the Nazis burned 580 prisoners in a final blaze of terror.

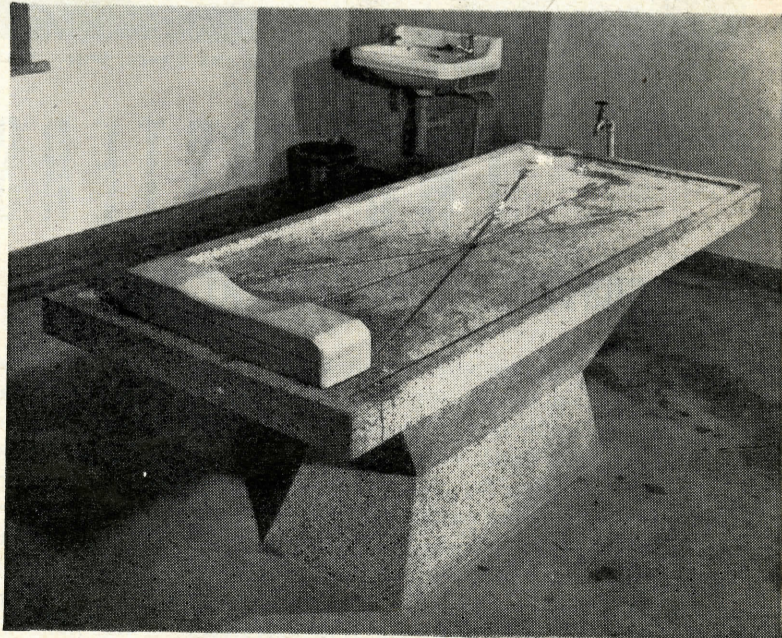
## Vught Concentration Camp (continued)



**Moat and electrified wire** surrounded the camp. During German regime anyone who came near fence was shot. Nobody ever escaped. The newly dead had to appear at morning parade, supported by comrades who said, "Present but meanwhile died."



**Gallows** had very low stools, so that the short drop did not break the neck but only strangled the victim when the stools were kicked from under. Once 58 women were jammed overnight in a 12x7-ft. room at Vught. By morning 11 were dead, 9 insane.



**Dissecting table**, with drainage hole in center, was used to lay out bodies and knock the gold teeth out of the dead mouths. Tar was sometimes inserted in the bodies to hasten burning. The most notorious commandant at Vught was named Gruenewald.